

The Wellington News

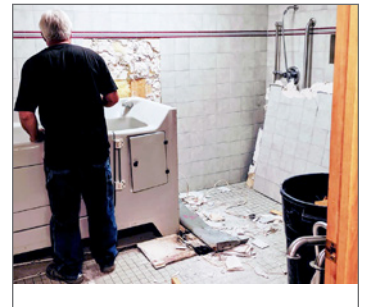
AUGUST
2019

Assisted Living • Respite Care Services

Facility News

Renovations! That is our big news. We enjoyed 3 weeks of noise and disruption, but everything is looking wonderful. Renovations include: new outside doors including the automatic front doors, new entry carpet and paint, new windows all around, new flooring in the kitchen, pantry, dining, & laundry rooms, new cabinets in the kitchen and laundry, new thermostats in all residents' rooms, removal of the brick planter opening up our dining room, new light fixtures in the dining room, kitchen, activity room and hallways and a new tub.

Out with the Old, In with the New



Upcoming Activities

August 14th 12:30 - 4 pm Senior Tail Gate sponsored by Slinger Parks & Rec. at Rueckle's Field (next to the middle school) Rueckle's Field shelter will be set up with a BIG screen to watch the Milwaukee Brewers game. They will be grilling out and have light refreshments for us. This event is free, we need only bring our own place settings. What a great chance to me up with some of our other senior friends from the area.

August 17th at 2 pm. Hartford Helping Hands 4H will be back to play a special Bingo game with us.

August 31th 10- am – 3 pm: Hartford Piggly Wiggly **Brat Fry fundraiser** for Wellington Place will be held again on Saturday Let's hope we have a sunnier day this time. Come on down for delicious brats, burgers or hot dogs, chips and a beverage.

Wellington Place at Hartford

615 Hilldale Drive, Hartford, WI 53027
262.673.3544

Monica Rakowski, Administrator

 **Like Us On Facebook**

As a non-profit 501c3 community, we thank you for supporting our mission of service to seniors through tax-deductible donations of cash or useful items.

Please call our office.



**WISCONSIN
ILLINOIS**
SENIOR HOUSING INC.

WellingtonPlaceHartford.org

WE ACCEPT CREDIT CARDS

DONATE SAFELY AND EASILY ONLINE:

WellingtonPlaceHartford.org/Donate



Wish List

Our fundraising goals include first and foremost a wheelchair accessible van of our own.

We also would like to make improvements to our pond.

We want to add a walking path that extends all the way around the pond. If it were a paved path it would be accessible to all even wheelchairs.

If you have a rhubarb rhizome that could use thinning, we would love to help you out. We have just the place for it to grow and supply us with delicious healthy treats.

WiCAL

Wisconsin Center for Assisted Living

Happy Birthday!

Residents

Aug. 9	Carol G.	79 yrs
Aug. 14	Bob B.	88 yrs
Aug. 19	Carolyn S.	79 yrs
Aug. 19	Harry M.	87 yrs

Staff

Aug. 19	Gina
---------	------

Therapy Success Story

Every one of our residents on a physical therapy regimen has graduated out of the direct care of PT into the daily care of our Activities Coordinator to continue the progress they've made. We like making our PTs so happy.

Photo Highlights



A little mother/daughter time in the garden with June and daughter, Nancy



CNA Appreciation Week

Your Wellington Staff

Office Hours: 8:00 AM to 5:00 PM

Visiting Hours 8:00 AM to 8:00 PM

Monica Rakowski	Administrator
Angie Reynolds-Klick	Care Coordinator
Heather King	Unit Coordinator
Andrea Kuslits	Coach
Lucinda Gohman Kramer	Activity Coordinator
Gina Buettner	Cook
Katie Marschner	Housekeeping/Dietary Aide
Stephanie B.	
Valeria P.	
Salina D.	
Ashley K.	
Ciarah M.	
Lauren H.	
Beci E.	
Meah F.	
Sabrina P.	
Hailey C.	
Ashlyn K.	
Taylor M.	
Kathy F.	

Newsletter Production by PorterOneDesign.com

Home Health Available to Residents

We've teamed up with Transitions At Home for convenient, quality in-home medical care at Wellington Place. RNs, therapists and health aides provide quality care after surgery, illness or injury.

Transitions can provide care in your home too.

Call for a free, in-home consultation.



TRANSITIONS
AT HOME

262.723.2700 [TransitionsHealth.org](https://www.TransitionsHealth.org)

Serving southern & central WI. Transitions At Home is a non-profit WISH agency.

